

## **DOSSIER DE CONSULTATION DES ENTREPRISES**

---

### **INSTALLATION D'UN VOLUME DE STOCKAGE COUPLE A LA CENTRALE PHOTOVOLTAÏQUE**

#### **Lot Electricité – Batterie de stockage**

#### ***Cahier des Clauses Techniques Particulières (CCTP)***

## **ANNEXE 02**

### **PRODUCTION PV ESTIMEE**



**PVsyst V8.0.20**

# Simulation annuelle des productions

## Système 50 kVA/128 Kwh/back-up 70 Kwh

### Main results

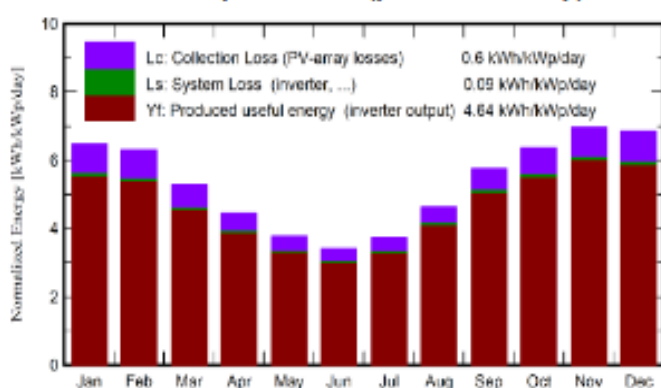
#### System Production

Produced Energy	267.26 MWh/year	Specific production	1677 kWh/kWp/year
Used Energy	230.96 MWh/year	Perf. Ratio PR	86.22 %
		Solar Fraction SF	63.35 %

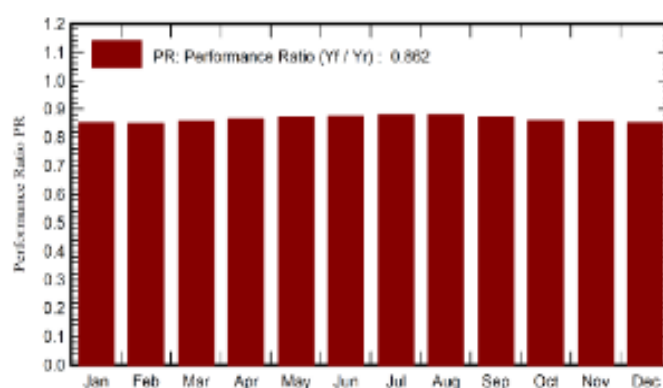
#### Battery ageing (State of Wear)

Cycles SOW	78.9 %
Static SOW	93.3 %
Battery lifetime	4.7 years

Normalized productions (per installed kWp)



Performance Ratio PR



### Balances and main results

	GlobHor kWh/m²	DiffHor kWh/m²	T_Amb °C	GlobInc kWh/m²	GlobEff kWh/m²	EArray MWh	E_User MWh	E_Solar MWh	E_Grid MWh	EFrGrid MWh
January	203.1	82.43	26.19	201.1	196.4	27.96	20.94	16.50	10.77	4.43
February	177.0	68.60	26.34	176.7	172.5	24.59	18.84	14.23	9.70	4.61
March	161.7	74.62	25.53	163.7	159.6	23.01	16.68	11.20	11.16	5.48
April	130.4	57.54	23.76	133.6	130.2	18.98	21.42	12.89	5.54	8.53
May	112.7	51.80	21.99	116.8	112.7	16.73	19.42	11.36	4.87	8.06
June	98.2	41.98	20.49	102.6	98.8	14.77	17.78	9.23	5.07	8.55
July	111.1	42.80	19.43	115.6	111.6	16.69	22.54	11.43	4.78	11.10
August	139.1	51.14	19.68	143.5	139.4	20.73	16.43	9.87	10.24	6.56
September	169.6	56.43	20.69	172.7	168.8	24.67	20.63	12.43	11.57	8.20
October	196.3	68.22	22.64	197.3	193.2	27.80	20.28	12.60	14.45	7.68
November	209.4	76.48	23.61	209.1	204.6	29.32	15.86	10.32	18.22	5.54
December	213.7	89.85	25.71	212.4	207.7	29.63	20.15	14.26	14.58	5.89
Year	1922.3	761.88	22.99	1945.0	1895.5	274.88	230.96	146.32	120.94	84.65

#### Legends

GlobHor	Global horizontal irradiation	EArray	Effective energy at the output of the array
DiffHor	Horizontal diffuse irradiation	E_User	Energy supplied to the user
T_Amb	Ambient Temperature	E_Solar	Energy from the sun
GlobInc	Global incident in coll. plane	E_Grid	Energy injected into grid
GlobEff	Effective Global, corr. for IAM and shadings	EFrGrid	Energy from the grid